

## CAR-T Engager proteins optimize anti-CD19 CAR-T cell therapies for lymphoma

Lihe Su, Lan Wu, Roy R. Lobb, Paul D. Rennert & Christine Ambrose

To cite this article: Lihe Su, Lan Wu, Roy R. Lobb, Paul D. Rennert & Christine Ambrose (2022) CAR-T Engager proteins optimize anti-CD19 CAR-T cell therapies for lymphoma, *Oncolmmunology*, 11:1, 2111904, DOI: [10.1080/2162402X.2022.2111904](https://doi.org/10.1080/2162402X.2022.2111904)

To link to this article: <https://doi.org/10.1080/2162402X.2022.2111904>



© 2022 The Author(s). Published with license by Taylor & Francis Group, LLC.



[View supplementary material](#)



Published online: 17 Aug 2022.



[Submit your article to this journal](#)

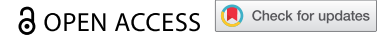


[View related articles](#)



[View Crossmark data](#)

ORIGINAL RESEARCH



## CAR-T Engager proteins optimize anti-CD19 CAR-T cell therapies for lymphoma

Lihe Su\*, Lan Wu\*, Roy R. Lobb, Paul D. Rennert, and Christine Ambrose

Department of Research & Development, Aleta Biotherapeutics, Natick, MA, USA

### ABSTRACT

B cell lymphoma therapy has been transformed by CD19-targeting cellular therapeutics that induce high clinical response rates and impressive remissions in relapsed and refractory patients. However, approximately half of all patients who respond to CD19-directed cell therapy relapse, the majority within 6 months. One characteristic of relapse is loss or reduction of CD19 expression on malignant B cells. We designed a unique therapeutic to prevent and reverse relapses due to lost or reduced CD19 expression. This novel biologic, a CAR T Engager, binds CD20 and displays the CD19 extracellular domain. This approach increases the apparent CD19 antigen density on CD19-positive/CD20-positive lymphoma cells, and prevents antigen-loss induced relapse, as CD19 bound to CD20 remains present on the cell surface. We demonstrate that this novel therapeutic prevents and reverses lymphoma relapse *in vitro* and prevents CD19-negative lymphoma growth and relapse *in vivo*.

### ARTICLE HISTORY

Received 30 May 2022  
Revised 01 Aug 2022  
Accepted 07 August 2022

### KEYWORDS

Engager protein; CAR T cells; CD19; CD20; lymphoma; relapse

### Introduction

Chimeric Antigen Receptor (CAR) transduced autologous T cells targeting the B cell malignancy antigen CD19 illustrate the great promise of cell therapy. Anti-CD19 CAR-T cells (CAR-19) induced high response rates and durable remissions in relapsed and refractory chronic and acute lymphocytic leukemia (CLL and ALL) and non-Hodgkin lymphoma (NHL) patients.<sup>1</sup> Long-term follow-up studies have demonstrated curative potential, with some patients reaching 10 years cancer-free.<sup>2-6</sup>

CAR-19 effectiveness is tempered by several critical issues. The cost of therapy remains high, and specialized infrastructure can limit where CAR therapies can be created or administered.<sup>7</sup> Preparative apheresis, consolidation, lymphodepletion and toxicities limit the use of CAR-T therapy in frail patients. Side effects from CAR-19 treatment include grade 3 + cytokine release syndrome and immune effector cell-associated neurotoxicity syndrome that can lead to prolonged hospitalization and additional cost of care.<sup>8</sup> More than half of responding patients subsequently relapse, often within a few months of treatment.<sup>9,10</sup> Many patients relapse due to loss or downregulation of the CD19 protein on their leukemia or lymphoma cells.<sup>11</sup>

Antigen escape mechanisms are common across therapeutic modalities in cancer treatment.<sup>12,13</sup> CAR-19 T cells put intense natural selection pressure on the malignant B cells, driving emergence of clones with lost or reduced CD19 expression. Antigen loss can occur via mutational events that prevent expression of all or part of the CD19 extracellular domain (ECD), and via transcriptional downregulation of expression.<sup>14,15</sup> Other mechanisms of escape from CAR-19



therapies include lineage switch to myeloid cell leukemia, and trogocytosis, a process by which CD19 is stripped from target cells by the CAR.<sup>16,17</sup>

We previously presented a class of molecules called bridging proteins<sup>18,19</sup> or CAR-T Engagers (CTE) that can be expressed by cells transduced with viral vectors, or can be expressed in mammalian cell culture *in vitro* and purified to create biologics for injection. Here, we describe a CTE biologic that increases CD19 antigen density on target lymphoma cells regardless of their level of CD19 expression. This biologic contains three functional domains: a modified CD19 ECD, an anti-CD20 binding domain and an anti-albumin binding domain. The protein, termed a CAR-19-CD20 T cell Engager (CTE-19.20), binds to CD20 and displays the CD19 ECD. CTE-19.20 proteins potently triggered CD19-negative lymphoma cell death in the presence of CAR-19 T cells *in vitro* and prevented antigen-loss relapse in an *in vitro* model of lymphoma escape from CAR-19 therapy. Using *in vivo* modeling we show that CTE-19.20 protein given alongside CAR-19 T cells prevented CD19-negative lymphoma expansion, eliminated disease, and significantly impacted survival. CTE-19.20 was readily expressed and secreted by transfected mammalian cells, was efficiently purified and demonstrated favorable biophysical properties. This therapeutic is in development to treat patients receiving CAR-19 therapeutics for B cell lymphoma and leukemia.


### Methods

#### Production of anti-CD19 CAR-T cells

Anti-CD19 CAR-T cells were produced and characterized as previously described,<sup>18</sup> except that some preparations were

**CONTACT** Paul D. Rennert  [paul.rennert@aletabio.com](mailto:paul.rennert@aletabio.com)  Department of Research & Development, Aleta Biotherapeutics, 27 Strathmore Rd, Natick, MA 01746, USA

\*These authors equally contributed to this work.

 Supplemental data for this article can be accessed online at <https://doi.org/10.1080/2162402X.2022.2111904>

© 2022 The Author(s). Published with license by Taylor & Francis Group, LLC.

This is an Open Access article distributed under the terms of the Creative Commons Attribution-NonCommercial License (<http://creativecommons.org/licenses/by-nc/4.0/>), which permits unrestricted non-commercial use, distribution, and reproduction in any medium, provided the original work is properly cited.

made using donor T cells that were activated for 48 hours before virus infection using LentiBoost (5 µl each of solutions A and B per ml of cells transfected; Fisher Scientific). 100 units/ml IL-2 was added at the start of the activation procedure and with every media change during the expansion phase.

### **Mammalian cell culture**

The JeKo-1 mantle cell lymphoma (MCL) and Ramos Hodgkin lymphoma cell lines were obtained from ATCC, which verifies cell line identity using short tandem repeat markers. Cells were cultured in complete media (RPMI plus 10% FBS, VWR). The JeKo-1 cell line expressing luciferase was generated using HLUC-Lv105 lentiviral particles (GeneCopoeia) and selected with puromycin. The cell lines were tested for mycoplasma (Invivogen) and were negative.

To knockout (KO) CD19 gene expression we used CRISPR/Cas9 technology. Four different CRISPR guide RNAs and Cas9 (Synthego) were combined at a 1:9 ratio and then added to luciferase-stable JeKo-1 cells suspended in Buffer R (Neon Transfection System, Thermo Fisher). The suspension was pulse electroporated at 1550 volts for 30 milliseconds, then the cells were plated into complete media to recover for 3 days. CD19 KO efficiency was determined by flow cytometry. A CD19 exon 2 guide RNA produced the highest number of KO cells and was plated using limiting dilution for single clone isolation. Expanded clones were re-assayed for CD19 expression. One clone, 1C8, was used for all studies.

### **Construction and purification of CTE19.20**

Previously we described a bridging protein containing a stabilized CD19 ECD linked to an anti-CD20 scFv derived from the anti-CD19 monoclonal antibody (MAb) Leu16.<sup>20</sup> Here we used three domains: an anti-CD20 VHH derived from a llama single-domain antibody, the stabilized CD19 ECD termed NT.1,<sup>20</sup> and the anti-albumin llama VHH, Alb8.<sup>21</sup> The construct, CTE-19.20, was cloned into mammalian cell expression vectors and transiently transfected into Expi293 cells (1 liter scale, Bon Opus Biosciences) or CHO cells (3 liter scale, Wuxi Biologics). The construct expressed in Expi293 cells contained a 6xHis-tag at the C-terminus (CTE-19.20-His).

Secreted CTE-19.20-His protein was purified by His-NTA column (Shanghai YuanYe) chromatography followed by monomer isolation by size exclusion chromatography (SEC, Superdex 200, GE) on an AKTA explorer (GE) by Bon Opus Biosciences. Research grade, CHO-derived protein (CTE-19.20-RG), was purified at WuXi Biologics using protein A-column and CEX chromatography, achieving 95.0% purity by SEC-HPLC. Purified proteins were also analyzed by SDS PAGE under reducing and non-reducing conditions using a 4–12% Bis-Tris Gel (NuPage). The endotoxin level was <1EU/mg.

### **Binding assays**

ELISA assays were developed to characterize binding to the various targeted proteins. We used His-tag based ELISAs as previously described,<sup>20</sup> and also developed assays that allowed

simultaneous detection of multiple binding events. ELISA plates (Thermo Fisher) were coated overnight at 4°C with 1 µg/ml FMC63 (Novus) and blocked with 200 µl/well 0.3% nonfat milk in Tris buffered saline (TBS) for one hour at room temperature. CTE-19.20 proteins were added in 1% BSA in TBS, in decreasing concentrations, and incubated for 1 hour. The plate was washed 3 times with TBS. Either 0.5 µg/ml biotinylated human albumin or 0.5 µg/ml biotinylated CD20-“nanodisc” (both from Acro Biosystems) was then added in 1% BSA in TBS for 1 hour, the plates were washed again, followed by incubation with streptavidin-HRP and TMB peroxidase substrate (Thermo Fisher) to detect.

Cell staining was performed at 4°C. CTE-19.20 proteins, diluted in FACS buffer (PBS + 1% BSA + 0.1% sodium azide), were incubated with cells for 30 minutes, washed, then incubated with PE-coupled anti-CD19 MAb FMC63 (EMD Millipore) (5 µl/sample) for 30 minutes, washed again, then fixed with a final concentration of 1% paraformaldehyde (Thermo Scientific). Samples were read on a Accuri C6 Plus flow cytometer (BD) and results analyzed using FlowJo. In some experiments incubations were done in human serum in order to evaluate the effect of excess human albumin on binding to cells.

Two assays were used to assess cross reactivity to murine proteins. For flow cytometry analyses, murine and human CD20 cDNA expression constructs (GenScript) were transiently transfected into 293 T cells using lipofectamine (ThermoFisher). The cells were removed using Accutase (Corning), and binding to CTE-19.20 proteins was detected using the flow cytometry assay. Second, murine albumin was coated onto an ELISA plate and increasing concentrations of CTE-19.20-His were added to the plate and incubated for 1 hour at room temperature. An anti-His-tag antibody coupled to HRP (Thermo Scientific) was used for enzymatic detection. The blocking, dilution buffer and wash buffers are as detailed above.

### **Cytotoxicity assays**

Cytotoxicity assays were run as previously described<sup>18,20</sup> using 293-CD20 cells or lymphoma cells as targets, CAR-19 T cells as effectors and CTE proteins to create the cytotoxic bridge. In some experiments the media was supplemented with human serum in order to evaluate the effect of excess human albumin on cytotoxicity.

### **Effect of CTE.19-20 proteins on cells and cellular responses**

To assess whether soluble CAR-T Engager protein could influence direct CD19 cytotoxicity, JeKo-1 cells were cultured with CAR-19 T cells alone or with up to 1 µg/ml CTE-19.20-RG, a saturating amount. The E:T ratios were 3:1 and 1:1. CAR-19-mediated cytotoxicity was measured after 48 hours. Down-regulation of cell surface CD20 was measured using JeKo-19KO cells incubated at 4°C or 37°C for varying lengths of time with CTE-19.20-RG, then analyzed by flow cytometry as described above. To evaluate whether excess CTE-19.20-RG could saturate target proteins, an order of addition assay was performed using the cytotoxicity assay. Three incubation

conditions were evaluated: (1) target cells, CTE-19.20-RG protein and CAR-19 T cells were added at the same time; (2) target cells and CTE-19.20-RG protein were incubated together at 37°C for 10 minutes and then added to CAR-19 T cells; (3) CTE-19.20-RG protein and CAR-19 T cells were incubated at 37°C for 10 minutes and then added to target cells. In each case, the target JeKo-1-CD19KO cells were seeded at  $1 \times 10^4$  cells per well in 50  $\mu$ l, CTE-19.20-RG was applied in 25  $\mu$ l medium per well for a final concentration of 1  $\mu$ g/ml, and CAR-19 T cells were applied to the well as 3:1 or 1:1 ratio to the target cells in 25  $\mu$ l volume. The plates were incubated at 37°C for 48 hours, then processed for luminescence measurement.

### ***In vitro* experiments modulating antigen density**

Expression of CD19 (FMC63-PE, Millipore) and CD20 (CD20-PE, Invitrogen) was evaluated on JeKo-1, Ramos and JeKo-19KO cell lines by flow cytometry. Protein expression was quantified using Bang Bead technology (Bang Labs), and following the manufacturer's instructions. The cell lines were also evaluated for an increase in apparent CD19 density following incubation with CTE-19.20-RG Engager protein.

In order to assess the additive effect of the CAR-T Engager protein on cytotoxicity, JeKo-1 cells were incubated with CAR-19 T cells at different E:T ratios in the presence or absence of different amounts of CTE-19.20-RG protein. The cells were incubated for 18 hours and then the extent of cytotoxicity was evaluated.

### ***In vitro* model of antigen escape**

Wildtype JeKo-1 cells were seeded at  $1 \times 10^4$  cells in 100  $\mu$ l per well of complete media in 96 well round bottom plates. CAR-19 T cells in 100  $\mu$ l complete media were added to give E:T cell ratios of 1:1, 0.3:1, or 0.1:1 and the co-culture was incubated for up to 13 days. Samples were evaluated at days 1, 6, 11, and 13 for the accumulation of a CD19-negative/CD20-positive population, using flow cytometry (FMC63-PE, and anti-CD20-APC, BD). Once a CD19-negative population emerged, the lymphoma cells were counted and replated at  $1 \times 10^4$  cells in 50  $\mu$ l complete media. JeKo-1 cells were left untreated in media, or were incubated with  $1 \times 10^5$  CAR-19 T cells added in 50  $\mu$ l complete media (E:T ratio of 10:1), with or without CTE19.20-His protein in 50  $\mu$ l complete media. In a set of control wells the CTE19.20-His protein was added to the JeKo-1 cells alone, without CAR-19 T cells. In each case, the 150  $\mu$ l co-culture was incubated for 48 hours. Then, the JeKo-1 cells were stained and analyzed by flow cytometry using HIB-CD19-PE (BioLegend) and anti-CD20-APC for cells not incubated with protein or with anti-CD20-APC and anti-ROR1-PE (BioLegend) for samples treated with CTE-19.20 protein. 7AAD was used to gate out dead cells and doublets were excluded using FSC height versus area and gating accordingly.

### ***In vivo* models of CD19-negative lymphoma**

All *in vivo* protocols were approved by the The Institutional Animal Care & Use Committee (IACUC) of The Cummings School of Veterinary Medicine at Tufts University. To determine

the stability of the CD19 knockout phenotype *in vivo*, cells were implanted subcutaneously in NOD-*scid* IL2Rgamma<sup>null</sup> (NSG) mice and allowed to expand *in situ* for 18 days. The implanted tumors were excised, disaggregated and a single-cell suspension was stained with antibodies to human CD19 and CD20.

For tumor efficacy models we used 6–10 week old female NSG mice (Jackson Labs) that were vivarium-acclimated for a minimum of 3 days prior to study initiation. All animals were socially housed in static, sterile bio-contained disposable cages pre-filled with corn cob bedding. Food (LabDiet) and acidified water were provided *ad libitum*. Mice were injected IV with 0.1 mL/animal of  $2.5 \times 10^6$  JeKo-19KO cells on day 1. On day 3, all animals were imaged and then randomized to give equivalent average tumor burden in each of six cohorts of  $n = 8$  mice/cohort. The following day, different cohorts of mice were given doses of 0, 0.016, 0.08, 0.4 and 2 mg/kg of CTE-19.20, followed by  $1 \times 10^7$  CAR-19 T cells 3–4 hours later. Protein was then dosed three times weekly for a total of 14 injections. Control cohorts included those treated with CAR-19 cells only and untreated mice.

At least once daily, animals received a cage side health check and clinical observation were performed. Body weights were recorded prior to tumor induction and then three times weekly. Body weights were used to calculate protein and D-luciferin doses. Whole body imaging was performed twice weekly for all animals on study 10–15 minutes after dosing with 15 mg/mL luciferin sc, at 0.2 mL/animal, with isoflurane anesthesia. Lumin values  $>1 \times 10^{10}$  total flux were considered cause for humane euthanasia.

### ***Pharmacokinetic (PK) Measurement by ELISA***

Balb/c or NSG mice were dosed once IV with 5 mg/kg CTE-19.20 proteins and blood samples were drawn over time to evaluate protein levels. Serum samples were diluted 10–2000-fold depending on the sample time point. The purified protein standard and diluted serum samples were prepared in the equivalent serum matrix. Samples were analyzed using the FMC63-capture and biotinylated-albumin ELISA described above.

## **Results**

### ***Characteristics of Ramos cells, JeKo-1 cells, CD19-deficient JeKo-1 cells and CAR-19 T cells***

We evaluated cultured Ramos, JeKo-1 and JeKo-19KO cells for CD19 and CD20 expression. JeKo-19KO cells were further evaluated for CD19 expression after infusion and growth for 18 days in NSG mice. CD19 expression remained deficient in the JeKo-19KO line both *in vitro* and *in vivo*; CD20 expression remained stable (Supplemental Figure 1a-d). Therefore, these cell lines represented CD19-positive and CD19-negative lymphoma, that both express CD20.

CAR-19 T cells were made using T cells from two donors. Exemplary preparations are shown (Supplemental Table 1). In these examples the CAR domain was expressed  $>80\%$  T cells and robust cytotoxicity was demonstrated at low E:T ratios against the JeKo-1 cell line.

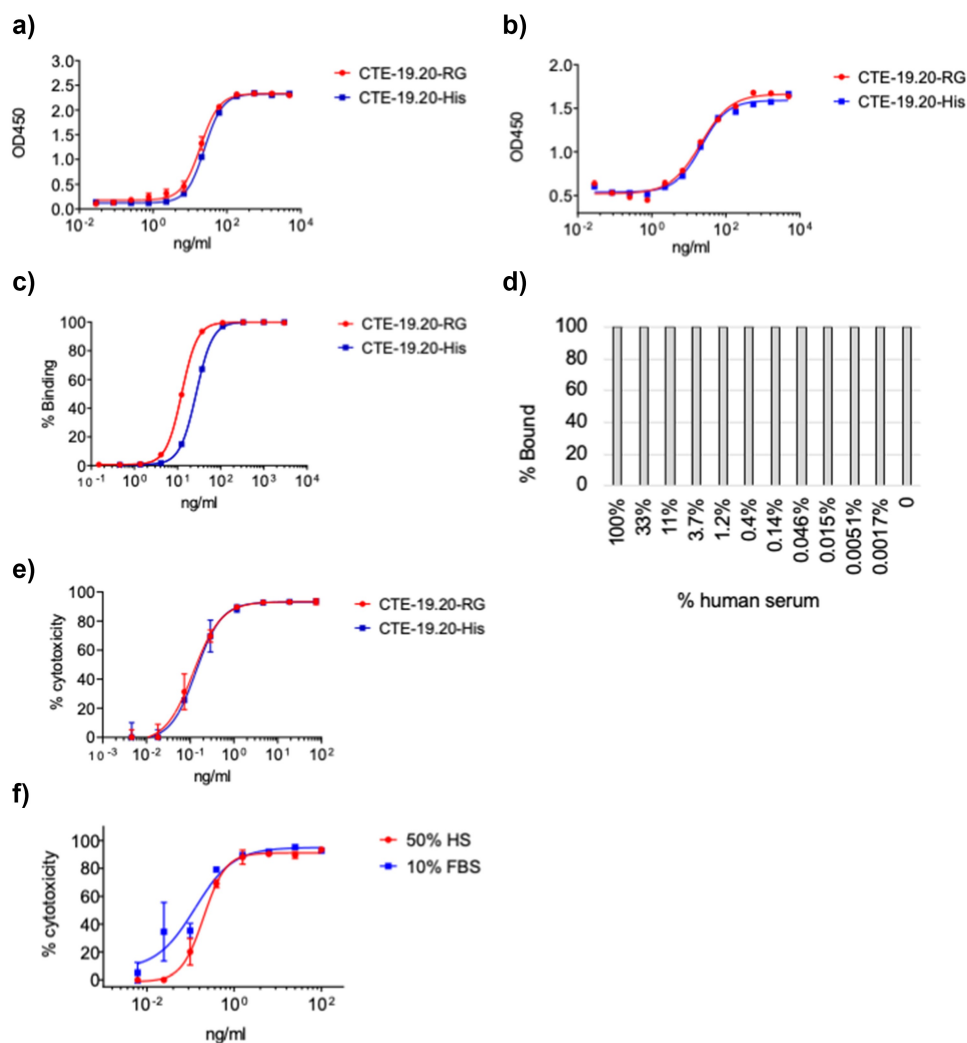
### Characterization of CAR-T Engager (CTE) proteins

CTE proteins bridge the CAR-T cells to new antigens via antigen-binding domains derived from antibodies and related scaffolds.<sup>18–20</sup> We created a CTE protein with an anti-CD20 llama VHH linked to a stabilized form of CD19 ECD, followed by an anti-albumin VHH. The apparent binding affinity,  $EC_{50}$ , of the anti-CD20 VHH for human CD20 was 4.2 and 2.8 pM in the quantitative flow cytometry assay using JeKo-1 cells and JeKo-19KO cells, respectively (Supplemental Figure 1e). The CTE proteins were produced in two transient transfections. A C-terminal His-tagged form called CTE-19.20-His was produced from Expi293 cells (0.1 g/L yield, 100% purity) and CTE-19.20-RG was made from CHO cells (1 g/L, 98.7% purity). CTE-19.20-RG is identical to CTE-19.20-His, minus the 6x His-tag. The purified proteins showed similar bands by PAGE analyses and showed high purity with minimal aggregation in SEC traces (Supplemental Figure 2a-c). The expected molecular weights of CTE-19.20-His and CTE-19.20-RG were 56.4 and 55.6 kDa respectively, however the proteins ran at

higher molecular weights presumably due to N-linked glycosylation.

CTE proteins were evaluated for binding to the three target molecules: CD20, albumin, and the anti-CD19 MAb FMC63 as described in Methods. Concentration curves were generated for each protein in each ELISA format (Figure 1a,b), and the binding affinities were calculated from multiple repetitions of the assays. The two protein preparations had very similar  $EC_{50}$  values of ~20 ng/ml (Table 1).

Using JeKo-19KO cells we evaluated the affinity of protein binding to cell surface expressed CD20 by flow cytometry. Cells were incubated with proteins and then with fluorescently labeled anti-CD19 and dose response binding curves were generated (Figure 1c). The CTE-19.20 proteins bound to JeKo-19KO cells with similar  $EC_{50}$  values, ~20 ng/ml, calculated from multiple repetitions of the assay (Table 1). Previously we demonstrated that a CD19-anti-CD20scFv protein could bind to 293-CD20 cells.<sup>20</sup> Those results are extended here to the CTE-19.20-His protein binding (Supplemental Table 2).



**Figure 1.** CTE proteins bind to anti-CD19 antibody coated plates and can be detected by ELISA assay using a) biotinylated albumin, and b) biotinylated CD20 membranes. c) Binding of CTE-19.20 proteins to JeKo-19KO cells. d) Binding of CTE-19.20 proteins to JeKo-19KO cells in the presence of excess serum. e) Dose dependent cytotoxicity mediated by CTE-19.20 proteins in the presence of JeKo-1KO cells and CAR-19 T cells (54% CAR-positive). f) CTE-19.20-RG-mediated cytotoxicity in the presence of media (10% FBS) or media further supplemented with human serum (50% HS), and CAR-19 T cells (78% CAR-positive).

**Table 1.** Characterization of CTE-19.20 protein activities. Top: apparent binding affinities in two ELISA assays. Middle: apparent binding affinity of binding to JeKo-19KO cells as measured by flow cytometry using anti-CD19 antibody FMC63 detection. Bottom: IC<sub>50</sub> values derived from the cytotoxicity assay using CAR-19 T cells (81% CAR-positive), JeKo-19KO cells and CTE-19.20 proteins. The activities of the two CTE-19.20 preparations were evaluated by unpaired, two-tailed, T-test: \*, p = .011.

| Protein       | Anti-CD19 capture /<br>CD20 detection: EC <sub>50</sub> (ng/ml), sd (n) | Anti-CD19 capture /<br>Albumin detection: EC <sub>50</sub><br>(ng/ml), sd (n) |
|---------------|---|---|
| CTE-19.20-His | 25.4, 5.0 (n = 2)   | 26.7, 6.5 (n = 6)   |
| CTE-19.20-RG  | 16.4, 2.4 (n = 3)   | 23.6, 7.4 (n = 7)   |
| Protein       | Flow cytometry binding affinity EC <sub>50</sub> (ng/ml), sd (n)        |   |
| CTE-19.20-His | 26.6, 2.2 (n = 3)*  |   |
| CTE-19.20-RG  | 11.9, 2.3 (n = 3)   |   |
| Protein       | Cytotoxicity IC <sub>50</sub> – mean (ng/ml), sd (n)                    |   |
| CTE-19.20-His | 0.14, 0.12 (n = 3)  |   |
| CTE-19.20-RG  | 0.13, 0.09 (n = 11)   |   |

These results showed that CTE-19.20 proteins bound their targets with high affinity in the plate-based ELISA format and the cell-based flow cytometry format. We further demonstrated that binding to albumin in up to 100% human serum did not interfere with CTE-19.20-RG binding to CD20 or to anti-CD19 as determined by percent binding in the flow cytometry assay (Figure 1d). In the presence of 33%-100% human serum the mean fluorescence intensity (MFI) was reduced by ~30%

To extend the binding results to a functional assay we performed cytotoxicity assays using CAR-19 T cells, JeKo-19KO cells and CTE-19.20 dose titrations. Representative results are shown (Figure 1e), and the mean IC<sub>50</sub> values (~0.13 ng/ml) from multiple experiments are shown in Table 1. Similar data were obtained using CAR-19 T cells, the 293-CD20 cell line and CTE-19.20-His (Supplemental Table 2). Serum albumin did not impact the degree of cytotoxicity (Figure 1f). This shows that the modest reduction in MFI did not affect cytotoxicity.

CTE-19.20 proteins therefore potently redirected CAR-19 T cells to kill CD19-negative lymphoma cells. Next, it was important to show that the presence of the CTE protein did not effect direct CAR-19 cytotoxicity, i.e. to lymphoma cells expressing CD19. Wildtype JeKo-1 cells were cultured with CAR-19 T cells alone or with up to 1 µg/ml CTE-19.20-RG, a saturating amount of protein, plus CAR-19 T cells. There was no impact of CAR-T Engager protein on CAR-19 cytotoxicity as compared to culture of the target lymphoma cells with CAR-19 alone, at the 3:1 and 1:1 E:T ratios (Supplemental Figure 3a,b).

We next evaluated whether CTE-19.20-His protein could induce internalization or downregulation of cell surface CD20, as measured by protein binding. JeKo-19KO cells were incubated at 4°C or 37°C to examine change in the total percentage and MFI of cells binding to CTE-19.20. There was no change in percent cells bound at 4°C, a temperature at which most proteins will not alter surface expression, nor was there any change at 37°C (Supplemental Figure 4a). This indicated that no CD20 downregulation or internalization was occurring. Indeed, the MFI of CTE-19.20-His staining increased and was maintained through 6 hours at 37°C (Supplemental Figure 4b).

To extend the CTE protein saturation and internalization results, we tested whether the order of addition of CTE protein to the cytotoxicity assay impacted cytotoxicity. We

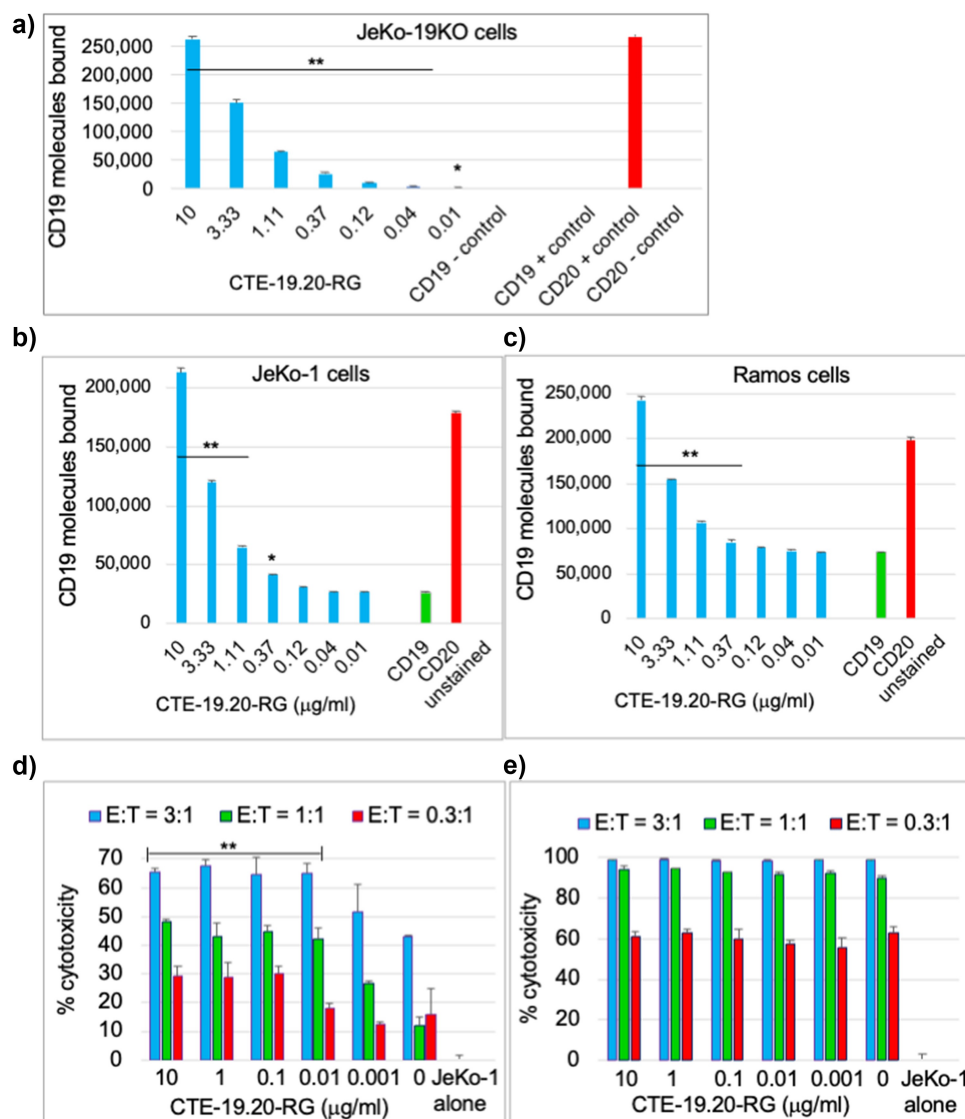
evaluated whether preincubation of 1 µg/ml CTE-19.20-RG with CAR-19 T cells, or with target tumor cells, would impact cytotoxicity, compared to adding the components simultaneously. E:T ratios of 3:1 and 1:1 were used and extent of cytotoxicity was compared to JeKo-19KO cells plus the CAR-19 T cells or to the JeKo-19KO cells plus protein (Supplemental Figure 5a,b). There was no difference in the extent of cytotoxicity regardless of the order in which the components were preincubated. This suggests a) that pre-binding of the CTE-19.20 protein to CAR-19 T cells does not impact CAR function and b) that the cytotoxicity triggered by binding of CAR-19 to target JeKo-19KO cells is not competed by a saturating concentration of CTE-19.20-RG protein.

### Evaluation of CD19 antigen density and enhanced cytotoxicity in the presence of CTE-19.20 protein

We used a fluorescent bead assay to quantify the increase of CD19 antigen density on the cell surface as increasing amounts of CTE-19.20-RG protein were incubated with the JeKo-19KO cells (Figure 2a). The background (no CTE-19.20-RG protein added) was equivalent to 515 CD19 copies. With increasing concentrations of CTE-19.20-RG, the apparent CD19 density increased until it was very similar to the number of CD20 molecules present: approximately 263,000 CD19 copies and approximately 267,000 CD20 copies (Figure 2a).

JeKo-1 and Ramos cells express both CD19 and CD20. As is typical of lymphoma, CD20 was brighter than CD19 on both cell lines as measured by flow cytometry, with a fluorescent intensity approximately 5 times high on JeKo-1 cells and 2-3 times higher on Ramos cells (Supplemental Figure 1a). On the JeKo-1 cell line, approximately 25,500 copies of the CD19 protein were detected, and approximately 177,000 copies of the CD20 protein (Figure 2b). Similarly, on Ramos cells, approximately 74,000 copies of the CD19 protein were detected, and approximately 198,000 copies of the CD20 protein (Figure 2c). CD19 density was measured as increasing amounts of CTE-19.20-RG protein was incubated with the cells. In both cell lines, incubation with >120 ng/ml of the Engager protein led to an increase in the apparent CD19 density, up to 10 µg/ml, at which point the signal detected was similar to that combination of the CD19 and CD20 antigen densities on each cell type, thus from ~25,000 copies to ~220,000 copies of CD19 on JeKo-1 cells, and from ~74,000 copies to ~240,000 copies of CD19 on Ramos cells (Figure 2b,c).

Increased antigen density should enhance CAR-19 mediated cytotoxicity against cells that naturally express CD19. We tested this hypothesis by incubating JeKo-1 cells with increasing amounts of CTE-19.20-RG protein and evaluating cell killing at 18 hours. There was a nominal, statistically insignificant increase when the E:T ratio was set to 3:1, but a marked increase at the lower E:T ratios of 1:1 and 0.3:1 (Figure 2c). Thus, in the initial period of cytotoxicity and at low E:T ratios, the increased apparent CD19 antigen density impacted the efficiency of CAR-19 cytotoxicity (Figure 2d). The effect was absent after 48 hours at which point the extent of killing had been maximized (Figure 2e).



**Figure 2.** Characterization of antigen density and cytotoxicity. A-C) Increase in apparent CD19 density on (a) JeKo-19KO, (b) wildtype JeKo-1 and (c) Ramos cells in the presence of increasing concentrations of CTE-19.20-RG protein vs CD19 staining and CD20 staining alone. D,E) Cytotoxicity of CAR-19 T cells (77% CAR-positive) against JeKo-1 cells at different E:T ratios in the presence of increasing concentrations of CTE-19.20-RG after (d) 18 hours and (e) 48 hours. Data were analyzed by one-tailed T test, \*:  $p < .05$ , \*\*:  $p < .02$  vs CD19 controls (a-c) and  $p < .02$  vs '0' (D).

### *In vitro models of lymphoma antigen loss and escape from therapy*

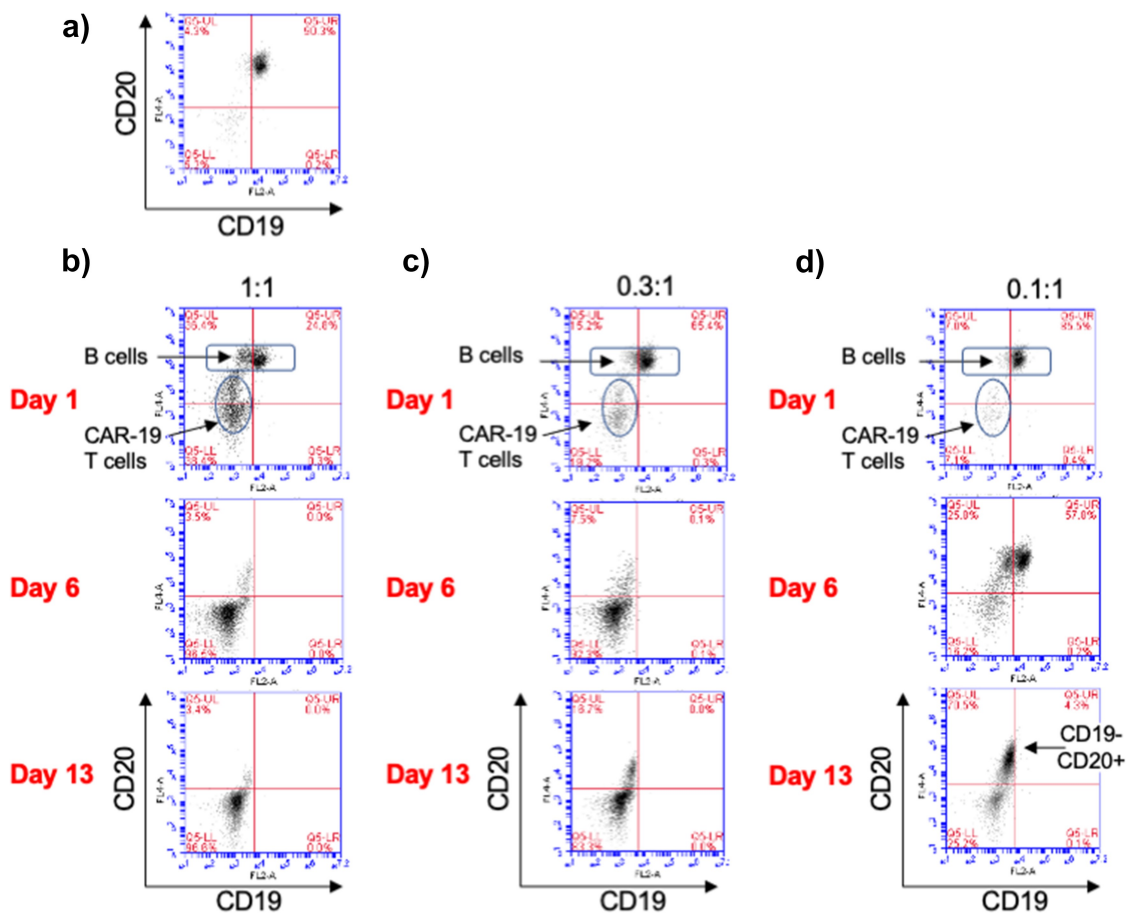
Previously we showed that a CAR-19 T cell can target and kill CD19-negative cells via a CD19 ECD linked to the anti-CD20 antibody leu16 scFv.<sup>20</sup> Here we use several cell models to extend those findings. CTE-19.20 proteins bound to the CD19-negative JeKo-19KO cells and induced dose responsive cytotoxicity when CAR-19 T cells were added (Figure 1e, Table 1). The two CTE-19.20 protein preparations were equally potent in inducing cytotoxicity.

JeKo-1 cells have a very high proliferative index and we hypothesized that they may provide a useful model of antigen escape from CAR-T cell therapy. Therefore, we characterized the phenotype of JeKo-1 cells under CAR-T pressure. JeKo-1 cells are CD19-positive and CD20-positive and the vast majority are double-positive (Figure 3a). We derived an antigen escape model by limiting the number of CAR-T cells

versus a fixed number of JeKo-1 cells and by increasing culture time (Figure 3b-d).

JeKo-1 cells escaped from CAR-19 cytotoxicity via cell population-level loss of CD19 expression (Figure 3). This occurred even at a 1:1 E:T ratio as seen in column B, days 6 and 13. The effect was more pronounced at the 0.3:1 and 0.1:1 E:T ratios as seen in column C, days 6 and 13, and column D, where the effect was especially pronounced at day 13. Notably, the 0.1:1 E:T ratio was ineffective in inducing cytotoxicity (see Figure 2, Day 6) yet even this modest level of selective pressure imposed by the CAR induced a shift from a mainly double-positive (CD19 and CD20 positive) population on day 1 to a mixed population on day 6 to a population dominated by CD19-negative, CD20-positive cells by day 13.

Since antigen loss and tumor cell escape occurred across this range of E:T ratios and days of incubation, a second study evaluated the effect of adding the CTE-19.20 protein to the



**Figure 3.** Development of a JeKo-1 antigen escape model from treatment with CAR-19 T cells (55% CAR-positive) *in vitro*. The position of CAR-19 cells and the target JeKo-1 cells is indicated in the flow cytometry profiles is shown to the left of the panels. The designation of CD19-positive and CD20-positive cell populations is shown to the right of the panels. a) JeKo-1 cells express CD19 and CD20, b) E:T ratio 1:1 from day 1–13. c) E:T ratio 0.3:1 from day 1–13. d) E:T ratio 0.1:1 from day 1–13.

culture. As a control, the lymphoma cells were replated without the addition of excess CAR-19 T cells or of CTE protein. After 48 hours, a mixed phenotype lymphoma cell population had emerged consisting of CD20-positive/CD19-positive cells, CD20-positive/CD19-low cells, and CD20-positive/CD19-negative cells (Figure 4a). The identity of the lymphoma cells was confirmed using anti-ROR1-PE; there is no ROR1 on CAR-T cells. The addition of CAR-19 T cells plus CTE-19.20 protein, but not the CAR-19 T cells alone nor the CTE-19.20 protein alone, was sufficient to kill all target JeKo-1 cells post escape and recovery (Figure 4b). These results show that lymphoma cell escape by loss of CD19 expression can be rapidly induced *in vitro* and fully reversed using the CD20-targeting bridging protein, CTE-19.20 and CAR-19 T cells.

### ***In vivo* modeling**

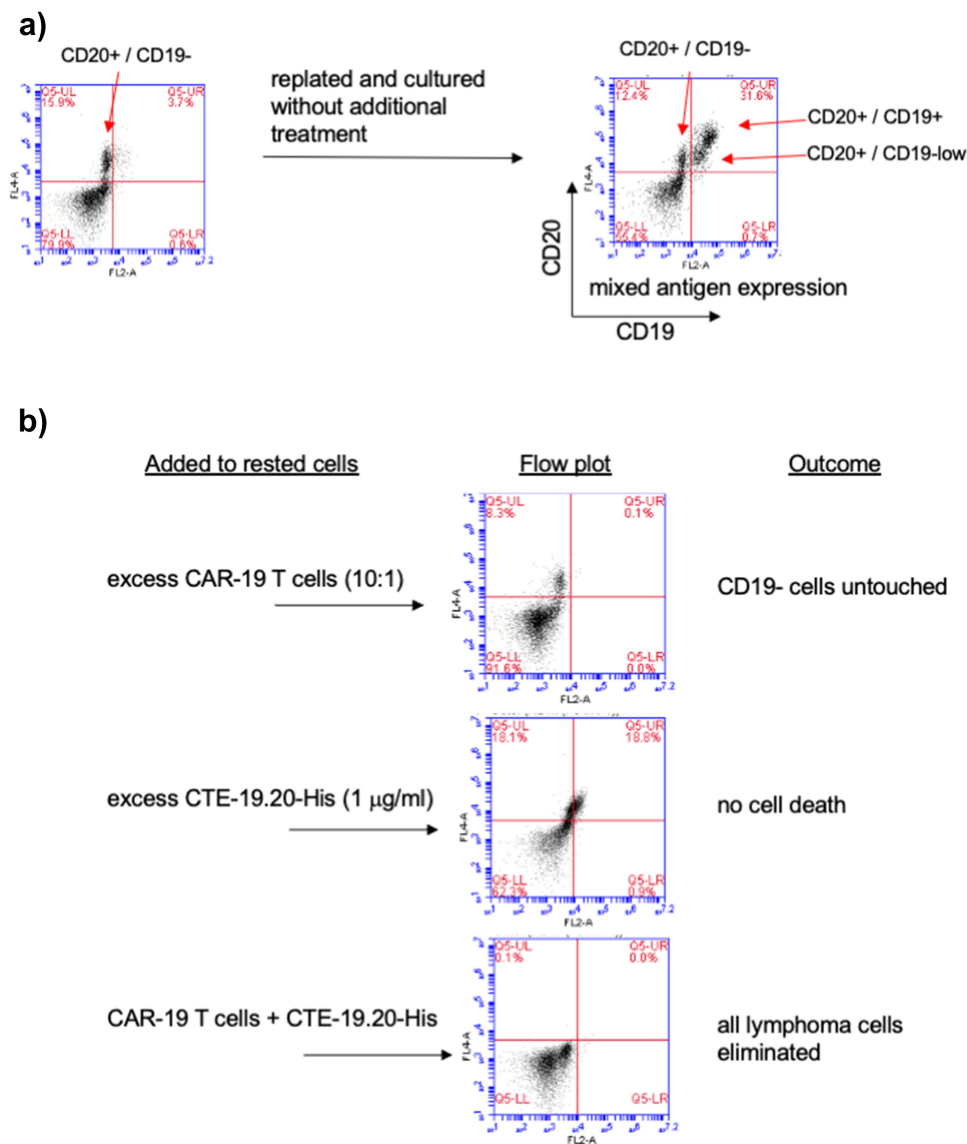
Several *in vivo* models were performed using the JeKo-19KO cell line, CTE19.20 proteins and CAR-19 T cells. Animals were injected with JeKo-19KO lymphoma cells which were implanted for 4 days prior to treatment with CAR-19 T cells and CTE-19.20 protein. CAR-19 T cells were injected once, and CTE-19.20 protein was given 3x weekly, and tumor burden was quantified.

In the initial study, the CTE.19.20-His and CTE-19.20-RG protein preparations were screened for *in vivo* activity at a dose of 2 mg/kg in the presence of CAR-19 T cells as compared to cohorts given CAR-19 T cells only, or left untreated. Thrice weekly dosing with CTE-19.20 proteins restrained lymphoma development through day 28 (Figure 5a) at which time luminescence rapidly increased in the untreated and CAR-19 treated mice, and they began succumbing to disease (Figure 5b,c).

Next we performed a dose titration of CTE19.20-RG across 4 cohorts: 2 mg/kg, 0.4 mg/kg, 0.08 mg/kg and 0.016 mg/kg. Animals were dosed with protein until day 31 at which time dosing was stopped in order to evaluate lymphoma relapse. Nine days later, on day 42, there was no sign of luminescence in animals treated with CAR-19 plus 2 mg/kg CTE-19.20-RG and only a minimal signal was seen in 2 of 8 animals treated with CAR-19 plus 0.4 mg/kg CTE-19.20-RG (Figure 5d). Lower doses of CTE-19.20-RG were less effective in preventing relapse after dosing cessation with 4/8 and 6/8 animals showing low but clear luminescent signals in the 0.08 and 0.016 mg/kg cohorts, respectively.

Body weight data reflected the relative health of the treated animals as compared to controls. Mice treated with CAR-19 plus CTE-19.20-RG protein continued to gain weight throughout the protein dosing period (until day 31), while the control animals began losing weight at approximately day 25 (Figure 5e). Even





**Figure 4.** Reversal of antigen-loss mediated relapse from CAR-19 treatment *in vitro*. a) CAR-19 cells (55% CAR-positive) were incubated with JeKo-1 cells (E:T 1:1) for 13 days, and then rested for 48 hours. Expression of CD19 and CD20 was monitored by FACS. b) CTE-19.20 protein was added to the rested culture, or CAR-19 T cells were added to the rested culture, or both CTE-19.20 and CAR-19 T cells were added to the rested culture.

after dosing with protein was stopped, the animals in the treated cohorts maintained body weight through the end of the study (day 42) and the highest dose-treated cohort continued to gain weight with the last recorded weight taken on day 39 (Figure 5e).

To track tumor burden, lumin intensity was measured. Luminescence rapidly increased in the untreated group and in the CAR-19 treated group (Figure 5f) and all 16 of these animals expired before the end of the study (Figure 5g). In contrast, only 1/32 animals treated with CAR-19 plus CTE-19.20-RG expired (Figure 5g).

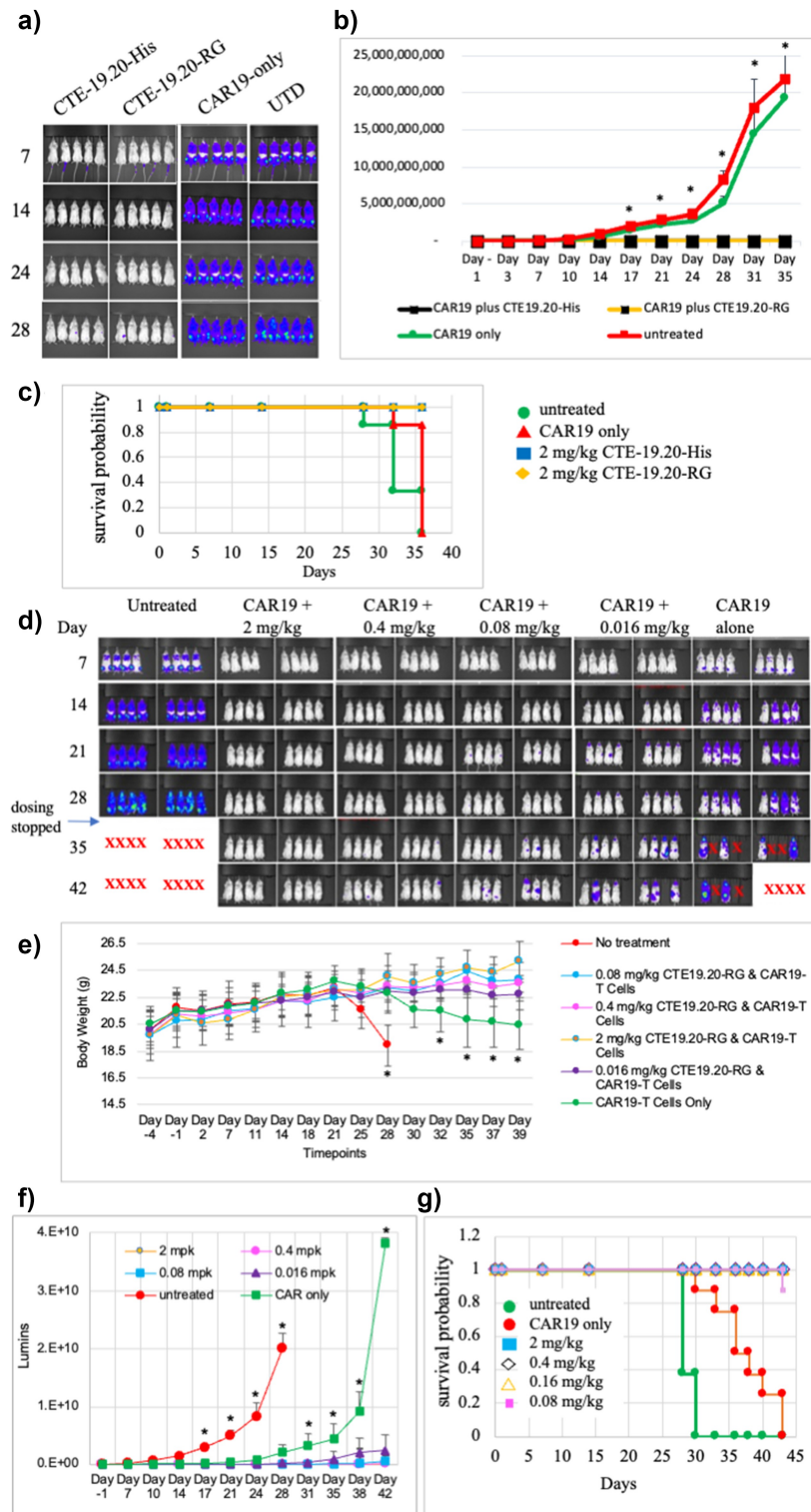
Protein efficacy *in vivo* is a function of the pharmacokinetic (PK) properties of the injected biologic. We evaluated the PK properties of CTE-19.20-His and CTE-19.20-RG in mice. The anti-CD20 domain used in the CTE-19.20 proteins does not bind mouse CD20 and the soluble form of human CD19 ECD has no known ligands.<sup>22</sup> The anti-albumin domain binds to mouse albumin weakly with an apparent EC<sub>50</sub> of 177 nM (Supplemental Figure 6). The half-life of the biologic in

mouse therefore depends on albumin-mediated recirculation via FcRN binding.

The CTE-19.20-His protein was evaluated in both Balb/c and NSG mice after a single injection IV and showed a similar half-life of 21 hours in both strains (Table 2). However, we sampled NSG mice 24 hours after injection of CTE-19.20-RG and could not detect the protein in mouse serum. Therefore, we performed a more time-point intensive analysis of CTE-19.20-RG PK in Balb/c mice. Surprisingly, the half-life of CTE-19.20-RG in mouse was shorter than expected, at 7.6 hours (Table 2).

## Discussion

We previously described a novel approach to the extend the reach of CAR therapies using diverse CAR-T Engager (CTE) proteins that contain the CD19 ECD linked to an antigen binding domain, such as an scFv or llama VHH.<sup>18–20</sup> These CD19-based CTE proteins bind to any antigen targeted, coat



**Figure 5.** CTE-19.20 proteins given with CAR-19 T cells successfully treat lethal CD19-negative lymphoma *in vivo*. a) Comparison of the efficacy of the 2 mg/kg dose of CTE-19.20-His, 2 mg/kg dose of CTE-19.20-RG, with CAR-19 cells alone, and donor-match UTD cells. b) Graph of cohort luminescence. c) Graph of survival probabilities during the study period. d) Dose response and efficacy of treatment with CTE-19.20-RG, during and after the dosing period (arrow, day 31). e) CTE-19.20-RG treatment supported continued weight gain in animals challenged with otherwise lethal lymphoma. d) CTE-19.20-RG treatment significantly reduced tumor burden as assessed by JeKo-19KO luciferase activity. e) Graph of survival probabilities during the study period. \*:  $p < .02$  by two-way T test of control cohorts vs all treatment cohorts.

the desired tumor with CD19, and retarget CAR-19 T cells to kill those tumor cells via the bound protein.<sup>18–20</sup> One therapeutic focus has been a modality in which the CAR T cell secretes the CTE protein.<sup>18,19</sup> This is thematically similar to

the secretion of bispecific CD3-based T cell engagers from CAR T cells,<sup>23,24</sup> with the additional characteristic of specificity for the CAR domain. We validated the approach preclinically using both solid and hematologic tumors, showing *in vitro*

**Table 2.** Evaluation of CTE-19.20 protein half-life in mice and the degree of protein sialylation.

| Protein       | T <sub>1/2</sub> ,<br>Balb/c | T <sub>1/2</sub> ,<br>NSG | cIEF, % basic pH<br>peaks | cIEF, % acidic pH<br>peaks |
|---------------|------------------------------|---------------------------|---------------------------|----------------------------|
| CTE-19.20-His | 20.63                        | 27.7                      | 26.2                      | 73.8                       |
| CTE-19.20-RG  | 7.6                          | nd                        | 100                       | 0                          |

and *in vivo* efficacy against Her2-positive ovarian carcinoma and CLEC12A-positive acute myeloid leukemia cells.<sup>18,19</sup>

The use of CTE proteins as injectable biologics provides an alternative therapeutic modality. Here we describe the development of a CTE protein to prevent and reverse relapses from CAR-19 cell therapy for B cell lymphoma and leukemia. This novel CTE contains the CD19 ECD, which binds to anti-CD19 domains expressed by CAR-T cells. Two additional domains, an anti-CD20 VHH and an anti-albumin VHH, were derived from immunized llamas. The resulting protein, CTE-19.20, functions by binding to both CD20 on target tumor cells and to CAR-19 T cells, thereby triggering cytotoxicity. The anti-albumin domain binds albumin which in turn binds the FcRn receptor to improve circulating half-life.<sup>25</sup>

The CAR-19 T cells are still able to bind directly to cell surface CD19, and gain the ability to bind the CD19 ECD that is bound, via the anti-CD20 VHH, to CD20. This additional source of CD19, coated on CD20 on the cell surface, provides two benefits: first, antigen density is increased, particularly on lymphoma cells that often have high cell surface expression of CD20,<sup>26</sup> and second, a depot for CD19 display on the lymphoma cell is created that is independent of CD19 expression. We quantified the increase in apparent CD19 density on JeKo-CD19KO, JeKo-1 and RAMOS cells when incubated with CTE-19.20-RG protein, showing that the signal increased to match the available number of CD20 molecules to which the CAR T engager could bind (Figure 2a).

Most NHL and ALL patients receiving CAR-19 T cells have a clinical response. However, suboptimal CAR-T cell expansion can occur if the patient T cell pool has intrinsically limited proliferative potential, as has been described after multiple rounds of aggressive chemotherapy as standard-of-care prior to cell therapy.<sup>27</sup> Such patients can have either no or a poor initial response to CAR-T cell therapy. Limited response to CAR-T cell therapy has also been associated with signatures of immunosuppression, for example in the lymphoma tumor microenvironment.<sup>28</sup>

Approximately 50% of patients who do respond to therapy subsequently relapse. There is widespread appreciation that antigen density and antigen loss in response to therapy are key drivers of successful CAR-19 T cell treatment.<sup>29</sup> Low antigen density or antigen loss uncouples the CAR-T cells from targets, leading to loss of response. This is one cause of diminished CAR-T persistence, as modeled in the *in vitro* “antigen escape” assays (Figures 3 and 4). Loss of CAR activity paradoxically lead to the reemergence of CD19-positive cancer cells (Figure 4). The distinction between CD19-negative relapse and CD19-positive relapse may reflect the timing of observation rather than mechanism in such instances.

Of note, antigen density is a important driver of CAR-T cell activity. This has been modeled with anti-CD22 CAR-T cells<sup>30</sup> and demonstrated by the use of  $\gamma$ -secretase-

antagonism to prevent BCMA shedding in response to anti-BCMA CAR-T therapy for multiple myeloma.<sup>31</sup> Detailed analyses of antigen density required for productive CAR-19 persistence and function identified specific expression thresholds below which CAR-T cells lost functionality.<sup>13,27</sup> Antigen density as measured by immuno-histochemistry was not sensitive enough to distinguish tumor populations with cells above or below those thresholds, whereas quantitative flow cytometry was sufficiently sensitive.<sup>13,27</sup> Similar antigen density thresholds have been identified in preclinical studies of CAR-T cells directed against diverse antigens including CD22, CD38, ALK and CD20.<sup>30,32–34</sup> Antigen density associated with clinical response has been described for CAR-19 and CAR-BCMA therapies for B cell lymphoma and multiple myeloma.<sup>15,31,35–37</sup> For example, CD19 antigen loss was associated with relapse from lymphoma in 62% of patients treated with an anti-CD19 CAR-T therapy, as assessed using quantitative flow cytometric methods.<sup>15,35</sup> Many mechanisms for CD19 antigen loss have been described, including transcriptional downregulation of expression and genetic alterations that prevent expression.<sup>13,29,38,39</sup>

Clinical trials in NHL, ALL and CLL have consistently demonstrated key features underlying patient outcome, leading to rapid relapse or, conversely, durable remission. Prominent among the features that predict successful patient outcome is rapid and prolonged expansion of CAR-T cells in the first 0–90 days post infusion, measured, for example, as CAR-T AUC<sub>0–28</sub> or AUC<sub>0–48</sub>.<sup>10,28,29</sup> Conversely, patients who have lower CAR-T cell expansion, for a shorter time, typically do not achieve a durable response.<sup>40–44</sup>

Increased CD19 antigen density enabled more rapid and efficient cytotoxicity with low levels of CAR-T cells relative to targeted wildtype JeKo-1 cells (Figure 2d). The increase in antigen density when incubating lymphoma cells with a CTE-19.20 protein was most apparent when the density of CD20 on the target cell surface was much higher than the CD19 density. This was clearly demonstrated on the JeKo-1 MCL cell line (Figure 2b). Even with a smaller difference in expression of CD20 and CD19, as in the Ramos Hodgkin lymphoma line, additive CD19 density was observed (Figure 2c). Of note, CD20 expression is higher than CD19 expression in most lymphoma although expression of both markers is variable.<sup>26,45</sup> While CD19 expression on lymphoma cells is typically lower than on normal B cells, CD20 expression is much higher, although again there is considerable variability among patients.<sup>26</sup> In CLL and ALL, CD20 expression is typically lower, and may be absent in some ALL patients.<sup>46</sup> Across these indications, in patients with CD20-positive malignancies, the ability to increase the apparent antigen density of CD19 would be expected to improve the response of CAR-19 T cells.<sup>35</sup> Since signaling remains transduced by the canonical anti-CD19 CAR domain, we expect the response of the CAR-19 T cells to antigen stimulation to be preserved. We note also that anti-CD20 CAR T cells and dual-antigen CAR T cells would be expected to be effective given the relative antigen densities.<sup>47</sup>

One caveat of the “bang bead” analysis was the relative insensitivity of the assay when adding CTE-19.20 protein to CD19-expressing cells, such that the increase in antigen density

was detectable only at concentrations of CTE-19.20-RG protein that are higher than the cytotoxicity  $IC_{50}$ . This phenomena is also noted in the flow cytometry analyses, where the binding  $EC_{50}$  measured by flow cytometry is always much higher than the cytotoxic  $IC_{50}$  (see Table 1). This difference indicates only a subset of CAR domains need to be bound in order to trigger cytotoxicity. By adding the CTE-19.20 protein to increase the available antigen present on the target MCL cell line, we trigger that critical threshold for cytotoxic activation of the CAR-T cell more quickly, and at lower E:T ratios.

The connection between loss of CD19 expression and relapse from CAR-19 treatment was demonstrated using the *in vitro* model of natural selection. Here, the CAR-19 T cells provide the selective pressure against CD19 expression by JeKo-1 MCL cells. At low E:T ratios, and over several weeks of culture, a CD19-negative cell population emerged (Figure 3). Once removed from the selection pressure imposed by CAR-19 T cells, a mixture of CD19-negative, CD19-dim and CD19-bright cells was observed that could then be eliminated by the addition of CAR-19 T cells and CTE-19.20 protein (Figure 4). The transient nature of CD19 loss provides preclinical evidence for the hypothesis that at least some of the “CD19-positive” relapses recorded in the clinical literature may actually result from transient loss and then rapid recovery of CD19 expression, with the CAR-19 T cell pool collapsing in between; this would be difficult to discern without longitudinal analyses.<sup>14</sup> Similar phenomena have been documented in the setting of multiple myeloma treatment with anti-BCMA CAR therapy.<sup>12</sup>

Our *in vivo* modeling used CD19-deficient cells to represent relapse from CAR-19 cell therapy. *In vivo*, CAR-19 cells were unable to detect and kill the JeKo-19KO cells (Figure 5a), leading to systemic and lethal lymphoma. Administration of CTE-19.20-RG protein along with the CAR-19 T cells prevented lethality. Of note, upon cessation of dosing with CTE-19.20-RG protein, animals remained lymphoma free for 11 days, at which time all control animals had expired (Figure 5b). On day 42, when the study ended, 75% of animals in the three highest dose cohorts had no luminescent signal (Figure 5e) and the overall survival rate was 95%. In contrast, only 12.5% of animals in the control cohorts were alive at day 42. This result was achieved despite the post-study finding that the CTE-19.20-RG protein had an unexpectedly short half-life in mouse of approximately 7.5 hours. The half-life is correlated with the extent of sialylation (Table 2), and current manufacturing and process development is focused on producing highly sialylated protein.

Patient relapse from CAR-19 therapy occurs rapidly, often within the first months following therapy.<sup>9–11</sup> The kinetics of relapse offer the potential to intervene using CTE-19.20 protein, using several different clinical designs. In the first instance we are developing this molecule with the goal of treating patients who have already received a CAR-19 therapy, by evaluating their clinical response through the first few months post CAR infusion. Diverse biomarkers can be used to track response and risk of relapse. PET imaging and ctDNA analyses have emerged as sensitive means of tracking lymphoma and leukemia regression.<sup>48–50</sup> Q-PCR or deep sequencing methods have provided a picture of CAR-19 expansion and persistence

over the first critical weeks and months after treatment.<sup>51</sup> Flow cytometry can track T cell expansion and also antigen expression on the targeted cancer cells.<sup>51–54</sup> Using such methods, patients at risk of relapse could be identified and treated with the CTE-19.20 biologic to improve outcomes. Pre-clinical proof of principal for CAR reactivation via vaccination suggests this is a productive approach.<sup>55</sup> Clinical examples include the response of CAR-19 T cell populations to checkpoint inhibition.<sup>28,56</sup> The CTE biologic can also be delivered in combination with CAR-19 T cells initially, to simultaneously target the two antigens, CD19 and CD20.

There are multiple efforts to address antigen loss, including dual-CARs and TanCARs targeting combinations of CD19, CD20, or CD22, for example.<sup>57</sup> Nevertheless, combination of CAR-CD19s with the CTE biologic has the immediate advantage of synergy with marketed CAR-19 therapies, with the potential to reduce relapses significantly.

In summary, we describe an optimal and straightforward approach to productive and sustained activation of CAR-19 T cells, using a potent CD19-anti-CD20 bridging protein with an extended half-life. We note that the extension of our approach to other CAR-T cell relapse settings is feasible, and we have built BCMA-containing CTE proteins capable of killing BCMA-negative cell lines. The use of the CTE biologic approach is in fact viable for any single antigen-targeting CAR-T cell, where relapse and resistance through antigen loss or modulation is almost inevitable in a large subset of treated patients.

## Acknowledgments

Alpha Preclinical LLC, Grafton MA USA performed the *in vivo* studies. Alyssa Birt and Fay Dufort produced some of the expression constructs, lentiviral vector particles and CAR T cells used in this study. Donna Grant provided expert guidance for the PK analysis. Victoria Arena De Souza provided a critical review of the manuscript prior to submission.

## Disclosure statement

All authors are employees and own stock and/or stock options in Aleta Biotherapeutics. In accordance with Journal and Publisher guidelines the authors declare this financial interest and further declare that research conducted may benefit Aleta Biotherapeutics. We have adopted ethical guidelines to prevent conflicts of interest from influencing our research.

## Funding

The author(s) reported there is no funding associated with the work featured in this article.

## Author contributions

Lihe Su and Lan Wu designed experiments and generated experimental data. Roy R. Lobb and Paul D. Rennert conceived of the experimental approach and application to specific indications; Paul D Rennert authored the manuscript; Roy R Lobb and Christine Ambrose edited the manuscript. Christine Ambrose designed and created specific therapeutics and oversaw research. The order of authorship for the co-first authors was determined by last name in alphabetical order.

## Data availability

The authors confirm that the data supporting the findings of this study are available within the article and its supplementary materials, and that raw data generated at Contract Research Organizations that support the findings of this study are available from the corresponding author [PDR] on request.

## References

- Ruella M, June CH. Chimeric antigen receptor T cells for B cell neoplasms: choose the right CAR for you. *Curr Hematol Malig Rep.* 2016;11(5):368–384. doi:10.1007/s11899-016-0336-z.
- Chong EA, Ruella M, Schuster SJ. Five-year outcomes for refractory B-Cell lymphomas with CAR T-cell therapy. *New England Journal of Medicine.* 2021;384(7):673–674. doi:10.1056/NEJMc2030164.
- Neelapu SS, Chavez JC, Sehgal AR, Epperla N, Ulrickson ML, Bachy E, Munshi PN, Casulo C, Maloney DG, de Vos S, et al. Long-term follow-up analysis of ZUMA-5: a phase 2 study of axicabtagene ciloleucel (Axi-Cel) in patients with relapsed/refractory (R/R) indolent non-hodgkin lymphoma (iNHL). *Blood.* 2021;138 (Supplement 1):93. doi:10.1182/blood-2021-148473.
- Cappell KM, Sherry RM, Yang JC, Goff SL, Vanasse DA, McIntyre L, Rosenberg SA, Kochenderfer J, et al. Long-term follow-up of anti-CD19 chimeric antigen receptor T-cell therapy. *J Clin Oncol.* 2020;38(32):3805–3815. doi:10.1200/JCO.20.01467.
- Schuster SJ, Bishop MR, Tam CS, Borchmann P, Jaeger U, Waller EK, Holte H, McGuirk J, Jaglowski S, Tobinai K, et al. Long-term follow-up of tisagenlecleucel in adult patients with relapsed or refractory diffuse large B-Cell lymphoma: updated analysis of juliet study. *Biology of Blood and Marrow Transplantation.* 2019;25(3, Supplement):S20–S21. doi:10.1016/j.bbmt.2018.12.089.
- Grupp SA, Maude SL, Rives S, Baruchel A, Boyer M, Bittencourt H, Bader P, Buchner J, Laetsch TW, Stefanski H, et al. Tisagenlecleucel for the treatment of pediatric and young adult patients with relapsed/refractory acute lymphoblastic leukemia: updated analysis of the ELIANA clinical trial. *Biology of Blood and Marrow Transplantation.* 2019;25(3):S126–S127. doi:10.1016/j.bbmt.2018.12.410.
- Lin JK, Muffly LS, Spinner MA, Barnes JJ, Owens DK, Goldhaber-Fiebert JD, et al. Cost effectiveness of chimeric antigen receptor T-cell therapy in multiply relapsed or refractory adult large B-cell lymphoma. *J Clin Oncol.* 2019;37(24):2105–2119. doi:10.1200/JCO.18.02079.
- Brudno JN, Kochenderfer JN. Recent advances in CAR T-cell toxicity: mechanisms, manifestations and management. *Blood Rev.* 2019;34:45–55. doi:10.1016/j.blre.2018.11.002.
- Maude SL, Laetsch TW, Buechner J, Rives S, Boyer M, Bittencourt H, Bader P, Verneris MR, Stefanski HE, Myers GD, et al. Tisagenlecleucel in children and young adults with B-Cell lymphoblastic leukemia. *New England Journal of Medicine.* 2018;378(5):439–448. doi:10.1056/NEJMoa1709866.
- Neelapu SS, Locke FL, Bartlett NL, Lekakis LJ, Miklos DB, Jacobson CA, Braunschweig I, Oluwole OO, Siddiqi T, Lin Y, et al. Axicabtagene ciloleucel CAR T-cell therapy in refractory large B-cell lymphoma. *New England Journal of Medicine.* 2017;377(26):2531–2544. doi:10.1056/NEJMoa1707447.
- Shah NN, Fry TJ. Mechanisms of resistance to CAR T cell therapy. *Nat Rev Clin Oncol.* 2019;16(6):372–385. doi:10.1038/s41571-019-0184-6.
- van de Donk NWCJ, Themeli M, Usmani SZ. Determinants of response and mechanisms of resistance of CAR T-cell therapy in multiple myeloma. *Blood Cancer Discov.* 2021;2(4):302–318. doi:10.1158/2643-3230.BCD-20-0227.
- Ruella M, Maus MV. Catch me if you can: leukemia escape after CD19-Directed T Cell Immunotherapies. *Comput Struct Biotechnol J.* 2016;14:357–362. doi:10.1016/j.csbj.2016.09.003.
- Plaks V, Rossi JM, Chou J, Wang L, Poddar S, Han G, Wang Z, Kuang S-Q, Chu F, Davis RE, et al. CD19 target evasion as a mechanism of relapse in large B-cell lymphoma treated with axicabtagene ciloleucel. *Blood.* 2021;138(12):1081–1085. doi:10.1182/blood.2021010930.
- Majzner RG, Mackall CL. Tumor antigen escape from CAR T-cell therapy. *Cancer Discov.* 2018;8(10):1219–1226. doi:10.1158/2159-8290.CD-18-0442.
- Perna F, Sadelain M. Myeloid leukemia switch as immune escape from CD19 chimeric antigen receptor (CAR) therapy [Internet]. *Translational Cancer Research.* 2016;5(2):S221–S225. doi:10.21037/9016.
- Miao L, Zhang Z, Ren Z, Tang F, Li Y. Obstacles and coping strategies of CAR-T cell immunotherapy in solid tumors. *Frontiers in Immunology.* 2021;12:1862. doi:10.3389/fimmu.2021.687822.
- Ambrose C, Su L, Wu L, Dufort FJ, Sanford T, Birt A, Hackel BJ, Hombach A, Abken H, Lobb RR, et al. Anti-CD19 CAR T cells potentially redirected to kill solid tumor cells. *PLoS One.* 2021;16(3):e0247701. doi:10.1371/journal.pone.0247701.
- Rennert PD, Dufort FJ, Su L, Sanford T, Birt A, Wu L, Lobb RR, Ambrose C, et al. Anti-CD19 CAR T cells that secrete a biparatopic anti-CLEC12A bridging protein have potent activity against highly aggressive acute myeloid leukemia in vitro and in vivo. *Mol Cancer Ther.* 2021;20(10):2071–2081. doi:10.1158/1535-7163.MCT-20-1030.
- Klesmith JR, Su L, Wu L, Schrack IA, Dufort FJ, Birt A, Ambrose C, Hackel BJ, Lobb RR, Rennert PD, et al. Retargeting CD19 chimeric antigen receptor T cells via engineered CD19-fusion proteins. *Mol Pharm.* 2019;16(8):3544–3558. doi:10.1021/acs.molpharmaceut.9b00418.
- Vosjan MJWD, Vercammen J, Kolkman JA, Stigter-van Walsum M, Revets H, van Dongen GAMS, et al. Nanobodies targeting the hepatocyte growth factor: potential new drugs for molecular cancer therapy. *Mol Cancer Ther.* 2012;11(4):1017–1025. doi:10.1158/1535-7163.MCT-11-0891.
- Tedder TF, Inaoki M, Sato S. The CD19-CD21 complex regulates signal transduction thresholds governing humoral immunity and autoimmunity. *Immunity.* 1997;6(2):107–118. doi:10.1016/S1074-7613(00)80418-5.
- Liu X, Barrett DM, Jiang S, Fang C, Kalos M, Grupp SA, June CH, Zhao Y, et al. Improved anti-leukemia activities of adoptively transferred T cells expressing bispecific T-cell engager in mice. *Blood Cancer J.* 2016;6(6):e430. doi:10.1038/bcj.2016.38.
- Choi BD, Yu X, Castano AP, Bouffard AA, Schmidts A, Larson RC, Bailey SR, Boroughs AC, Frigault MJ, Leick MB, Scarfö I, et al. CAR-T cells secreting BiTEs circumvent antigen escape without detectable toxicity. *Nat Biotechnol.* 2019;37(9):1049–1058. doi:10.1038/s41587-019-0192-1.
- Kim J, Bronson CL, Hayton WL, Radmacher MD, Roopenian DC, Robinson JM, Anderson CL, et al. Albumin turnover: fcRn-mediated recycling saves as much albumin from degradation as the liver produces. *American Journal of Physiology-Gastrointestinal and Liver Physiology.* 2006;290(2):G352–G360. doi:10.1152/ajpgi.00286.2005.
- Ginaldi L, De Martinis M, Matutes E, Farahat N, Morilla R, Catovsky D, et al. Levels of expression of CD19 and CD20 in chronic B cell leukaemias. *J Clin Pathol.* 1998;51(5):364–369. doi:10.1136/jcp.51.5.364.
- Mehta PH, Fiorenza S, Koldej RM, Jaworowski A, Ritchie DS, Quinn KM, et al. T cell fitness and autologous CAR T cell therapy in haematologic malignancy [Internet]. *Frontiers in Immunology* 2021; 12. <https://www.frontiersin.org/article/10.3389/fimmu.2021.780442>. cited April 16, 2022
- Wang C, Shi F, Liu Y, Zhang Y, Dong L, Li X, Tong C, Wang Y, Su L, Nie J, Han W, et al. Anti-PD-1 antibodies as a salvage therapy for patients with diffuse large B cell lymphoma who progressed/relapsed after CART19/20 therapy. *Journal of Hematology & Oncology.* 2021;14(1):106. doi:10.1186/s13045-021-01120-3.
- Lemoine J, Ruella M, Houot R. Born to survive: how cancer cells resist CAR T cell therapy. *Journal of Hematology & Oncology.* 2021;14(1):199. doi:10.1186/s13045-021-01209-9.

30. Ramakrishna S, Highfill SL, Walsh Z, Nguyen SM, Lei H, Shern JF, Qin H, Kraft IL, Stetler-Stevenson M, Yuan CM, Hwang JD, et al. Modulation of target antigen density improves CAR T-cell functionality and persistence. *Clin Cancer Res.* 2019;25(17):5329–5341. doi:10.1158/1078-0432.CCR-18-3784.
31. Pont MJ, Hill T, Cole GO, Abbott JJ, Kelliher J, Salter AI, Hudecek M, Comstock ML, Rajan A, Patel BKR, et al.  $\gamma$ -Secretase inhibition increases efficacy of BCMA-specific chimeric antigen receptor T cells in multiple myeloma. *Blood.* 2019;134(19):1585–1597. doi:10.1182/blood.2019000050.
32. Yoshida T, Mihara K, Takei Y, Yanagihara K, Kubo T, Bhattacharyya J, Imai C, Mino T, Takihara Y, Ichinohe T, et al. All-trans retinoic acid enhances cytotoxic effect of T cells with an anti-CD38 chimeric antigen receptor in acute myeloid leukemia. *Clin Transl Immunology.* 2016;5(12):e116. doi:10.1038/cti.2016.73.
33. Walker AJ, Majzner RG, Zhang L, Wanhainen K, Long AH, Nguyen SM, Lopomo P, Vigny M, Fry TJ, Orentas RJ, et al. Tumor antigen and receptor densities regulate efficacy of a chimeric antigen receptor targeting anaplastic lymphoma kinase. *Mol Ther.* 2017;25(9):2189–2201. doi:10.1016/j.ymthe.2017.06.008.
34. Watanabe K, Terakura S, Martens AC, van Meerten T, Uchiyama S, Imai M, Sakemura R, Goto T, Hanajiri R, Imahashi N, et al. Target antigen density governs the efficacy of Anti-CD20-CD28-CD3  $\zeta$  chimeric antigen receptor–modified effector CD8 + T cells. *J Immunol.* 2015;194(3):911–920. doi:10.4049/jimmunol.1402346.
35. Majzner RG, Rietberg SP, Sotillo E, Dong R, Vachharajani VT, Labanieh L, Myklebust JH, Kadapakkam M, Weber EW, Tousley AM, et al. Tuning the antigen density requirement for CAR T-cell activity. *Cancer Discov.* 2020;10(5):702–723. doi:10.1158/2159-8290.CD-19-0945.
36. Shah N, Chari A, Scott E, Mezzi K, Usmani SZ. B-cell maturation antigen (BCMA) in multiple myeloma: rationale for targeting and current therapeutic approaches. *Leukemia.* 2020;34(4):985–1005. doi:10.1038/s41375-020-0734-z.
37. Teoh PJ, Chng WJ. CAR T-cell therapy in multiple myeloma: more room for improvement. *Blood Cancer J.* 2021;11(4):1–18. doi:10.1038/s41408-021-00469-5.
38. Zhang Z, Chen X, Tian Y, Li F, Zhao X, Liu J, Yao Z, Zhang Y, et al. Point mutation in CD19 facilitates immune escape of B cell lymphoma from CAR-T cell therapy. *J Immunother Cancer.* 2020;8(2):e001150. doi:10.1136/jitc-2020-001150.
39. Xu X, Sun Q, Liang X, Chen Z, Zhang X, Zhou X, Li M, Tu H, Liu Y, Tu S, et al. Mechanisms of relapse after CD19 CAR T-cell therapy for acute lymphoblastic leukemia and its prevention and treatment strategies [Internet]. *Frontiers in Immunology.* 2019 [cited April 16, 2022];10. <https://www.frontiersin.org/article/10.3389/fimmu.2019.02664>.
40. Mueller KT, Maude SL, Porter DL, Frey N, Wood P, Han X, Waldron E, Chakraborty A, Awasthi R, Levine BL, et al. Cellular kinetics of CTL019 in relapsed/refractory B-cell acute lymphoblastic leukemia and chronic lymphocytic leukemia. *Blood.* 2017;130(21):2317–2325. doi:10.1182/blood-2017-06-786129.
41. Kochenderfer JN, Somerville RPT, Lu T, Yang JC, Sherry RM, Feldman SA, McIntyre L, Bot A, Rossi J, Lam N, et al. Long-duration complete remissions of diffuse large B Cell lymphoma after anti-CD19 chimeric antigen receptor T cell therapy. *Mol Ther.* 2017;25(10):2245–2253. doi:10.1016/j.ymthe.2017.07.004.
42. Frigault MJ, Maus MV. State of the art in CAR T cell therapy for CD19<sup>+</sup> B cell malignancies. *J Clin Invest.* 2020;130(4):1586–1594. doi:10.1172/JCI129208.
43. Hay KA, Gauthier J, Hirayama AV, Voutsinas JM, Wu Q, Li D, Gooley TA, Cherian S, Chen X, Pender BS, et al. Factors associated with durable EFS in adult B-cell ALL patients achieving MRD-negative CR after CD19 CAR T-cell therapy. *Blood.* 2019;133(15):1652–1663. doi:10.1182/blood-2018-11-883710.
44. Ogasawara K, Dodds M, Mack T, Lymp J, Dell'Aringa J, Smith J, et al. Population Cellular Kinetics of Lisocabtagene Maraleucel, an Autologous CD19-Directed Chimeric Antigen Receptor T-Cell Product, in Patients with Relapsed/Refractory Large B-Cell Lymphoma. *Clin Pharmacokinet.* 2021;60(12):1621–1633. doi:10.1007/s40262-021-01039-5.
45. Horna P, Nowakowski G, Endell J, Boxhammer R. Comparative Assessment of Surface CD19 and CD20 Expression on B-Cell Lymphomas from Clinical Biopsies: implications for Targeted Therapies. *Blood.* [published online ahead of print: 2019]. doi:10.1182/blood-2019-129600.
46. Cortelazzo S, Ponzoni M, Ferreri AJM, Hoelzer D. Lymphoblastic lymphoma. *Crit Rev Oncol Hematol.* 2011;79(3):330–343. doi:10.1016/j.critrevonc.2010.12.003.
47. Yin Z, Zhang Y, Wang X. Advances in chimeric antigen receptor T-cell therapy for B-cell non-Hodgkin lymphoma. *Biomarker Research.* 2021;9(1):58. doi:10.1186/s40364-021-00309-5.
48. Frank MJ, Hossain NM, Bukhari A, Dean E, Spiegel JY, Claire GK, Kirsch I, Jacob AP, Mullins CD, Lee LW, et al. Monitoring of circulating tumor dna improves early relapse detection after axicabtagene ciloleucel infusion in large B-Cell lymphoma: results of a prospective multi-institutional trial. *JCO.* 2021;39(27):3034–3043. doi:10.1200/JCO.21.00377.
49. Ogawa M, Yokoyama K, Imoto S, Tojo A. Role of circulating tumor DNA in hematological malignancy. *Cancers (Basel).* 2021;13(9):2078. doi:10.3390/cancers13092078.
50. Kuhn L, Roddie C, Kirkwood AA, Menne T, Cuadrado M, Marzolini MAV, Osborne W, Sanderson R, O'Reilly M, Townsend W, Benjamin R, et al. Early FDG-PET response predicts CAR-T failure in large B-cell lymphoma. *Blood Adv.* 2022;6(1):321–326. doi:10.1182/bloodadvances.2021005807.
51. Milone MC, Bhoj VG. The pharmacology of T cell therapies. *Mol Ther Methods Clin Dev.* 2018;8:210–221. doi:10.1016/j.omtm.2018.01.010.
52. Faude S, Wei J, Muralidharan K, Xu X, Wertheim G, Paessler M, Bhoj VG, Grupp SA, Maude SL, Rheingold SR, et al. Absolute lymphocyte count proliferation kinetics after CAR T-cell infusion impact response and relapse. *Blood Advances.* 2021;5(8):2128–2136. doi:10.1182/bloodadvances.2020004038.
53. Demaret J, Varlet P, Trauet J, Beauvais D, Grossemey A, Hégo F, Yakoub-Agha I, Labalette M, et al. Monitoring CAR T-cells using flow cytometry. *Cytometry Part B: Clinical Cytometry.* 2021;100(2):218–224. doi:10.1002/cyto.b.21941.
54. Shalabi H, Kraft IL, Wang H-W, Yuan CM, Yates B, Delbrook C, Zimelman JD, Giller R, Stetler-Stevenson M, Jaffe ES, et al. Sequential loss of tumor surface antigens following chimeric antigen receptor T-cell therapies in diffuse large B-cell lymphoma. *Haematologica.* 2018;103(5):e215–e218. doi:10.3324/haematol.2017.183459.
55. Reinhard K, Rengstl B, Oehm P, Michel K, Billmeier A, Hayduk N, Klein O, Kuna K, Ouchan Y, Wöll S, et al. An RNA vaccine drives expansion and efficacy of claudin-CAR-T cells against solid tumors. *Science.* 2020;367(6476):446–453. doi:10.1126/science.aay5967.
56. Chong EA, Melenhorst JJ, Lacey SF, Ambrose DE, Gonzalez V, Levine BL, June CH, Schuster SJ, et al. PD-1 blockade modulates chimeric antigen receptor (CAR)-modified T cells: refueling the CAR. *Blood.* 2017;129(8):1039–1041. doi:10.1182/blood-2016-09-738245.
57. Rafiq S, Hackett CS, Brentjens RJ. Engineering strategies to overcome the current roadblocks in CAR T cell therapy. *Nat Rev Clin Oncol.* 2020;17(3):147–167. doi:10.1038/s41571-019-0297-y.